

Printer and Peripheral Set-Up

Answers to “How do I make this printer work?” and “What plugs into what?”



You Can Do I.T. / Printer and Peripheral Set-Up
Prepared for Texas State Library and Archives Commission by Carson Block Consulting

Set up a wired (Ethernet) printer

Step 1: Check requirements

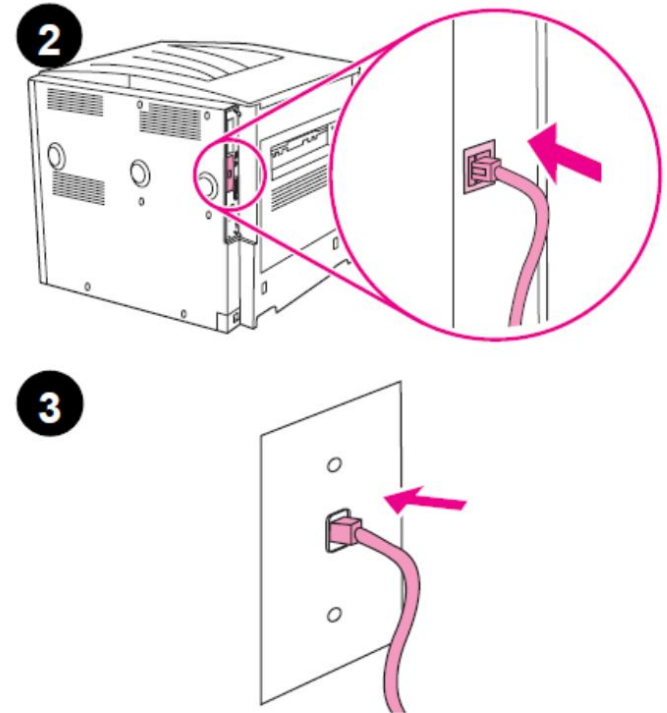
- Before installing the printer, make sure you have a functioning network router and an Ethernet cable.
- Make sure your computer is connected to the router, switch, or hub.

Step 2: Connect the printer to the network

- Connect the Ethernet cable to the Ethernet port on the printer.
- Connect the other end of the cable to an available port on the wired access point or router.
- Wait one full minute so the network has time to recognize the printer and assign it an IP address.
- Follow the manufacturer's instructions or prompts on the printer.

Step 3: Download and install the drivers and software

- On your computer, visit the printer manufacturer's website and download the corresponding drivers and installation software (or use the CD if the printer came with one and your computer has a CD drive).
- Follow the on-screen prompts to install, then use the wizard to find the printer on the network.



Set up a USB printer



1. Begin by plugging your printer into its power supply, but make sure the printer remains powered off.
2. Next, plug the USB cable into the printer, then the computer.
3. **If using Windows 8 or above (or Mac):** Turn the printer on.
 - a. Because it is USB connected, the printer should be easily recognized and installed by the computer. You may need to complete the installation by answering a few prompts.
 - b. If the computer does not recognize the printer, you can download the drivers from the manufacturer's website.
4. **If using Windows 7 or earlier,** leave the printer turned off. Begin by opening Control Panel and selecting "Add a Printer"—follow the prompts in the wizard, which may help you find the correct drivers. You may need to visit the manufacturer's website or use an installation CD.

Set up a wireless (WiFi) printer

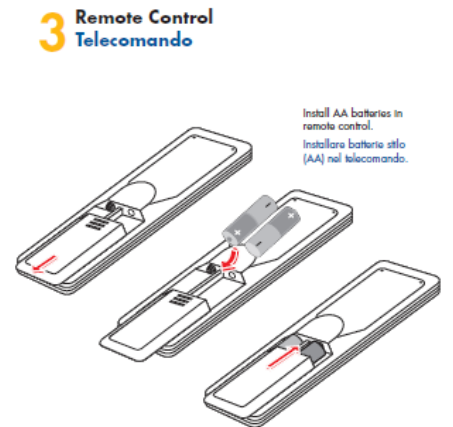
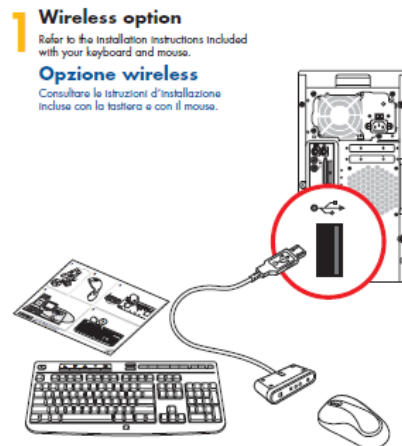
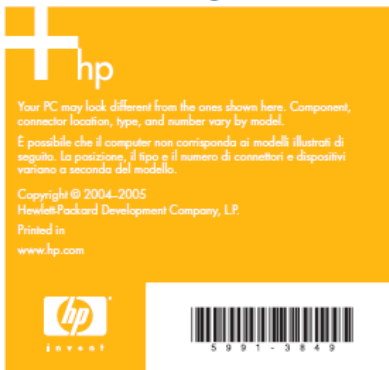
1. Follow the manufacturer's instructions for physically setting-up the printer.
2. On your Windows computer, open Devices and Printers by clicking the **Start** button , and then, on the Start menu, clicking **Devices and Printers**.
3. Click **Add a printer**.
4. In the Add Printer wizard, click **Add a network, wireless or Bluetooth printer**.
5. In the list of available printers, select the one you want to use, and then click **Next**.
6. If prompted, install the printer driver on your computer by clicking **Install driver**. If you're prompted for an administrator password or confirmation, type the password or provide confirmation.
7. Complete the additional steps in the wizard, and then click **Finish**.



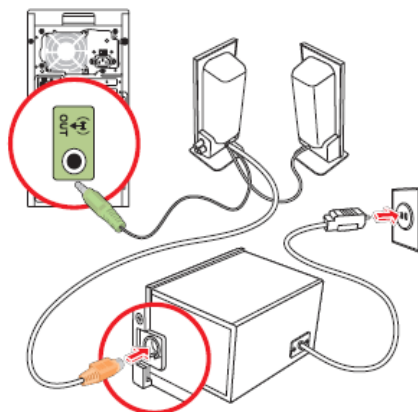
What plugs into what

The following contains a copy of an HP Media Center PC Setup Poster (© 2004–2005, Hewlett-Packard Development Company, L.P.) This is used without modification strictly for educational purposes. We specifically chose this handout because, while an older model of PC, it contains an excellent description of various ports and peripherals.

HP Media Center PC / Computer HP Media Center Quick Setup Schema di configurazione

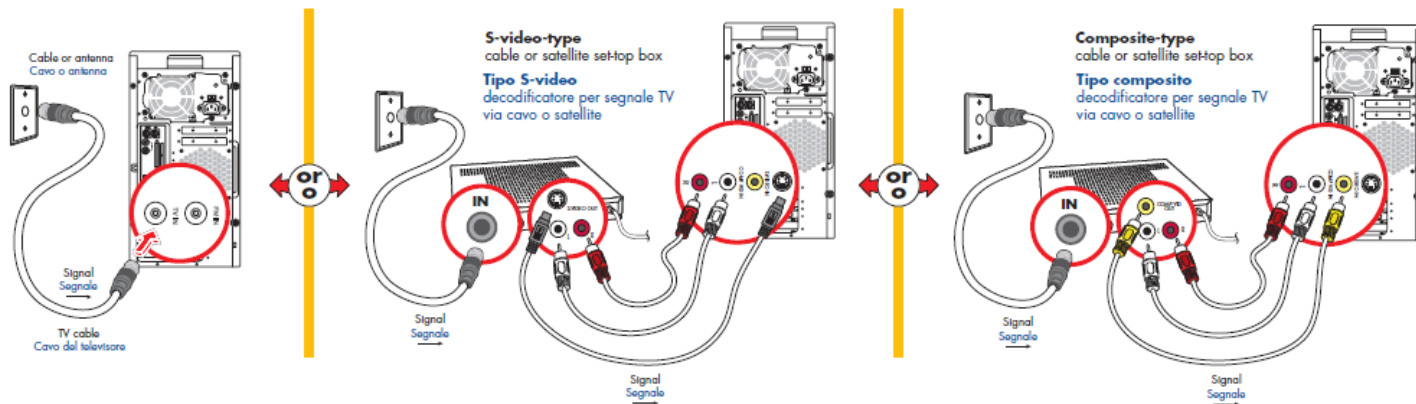


4 Speaker System (Select models only) Sistema di altoparlanti (Disponibile solo con alcuni modelli)

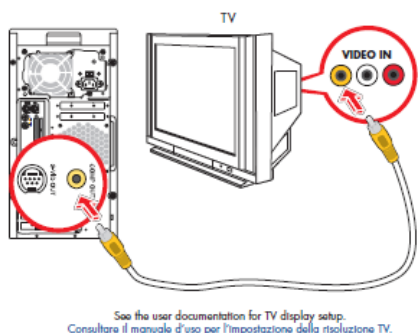


5 TV In Connect TV signal to computer Ingresso TV Collegare il segnale TV al computer.

If you use a cable or satellite set-top box, pass the signal through the box.
Se si usa un decodificatore per la TV via cavo o il satellite, far passare il segnale attraverso il decodificatore.

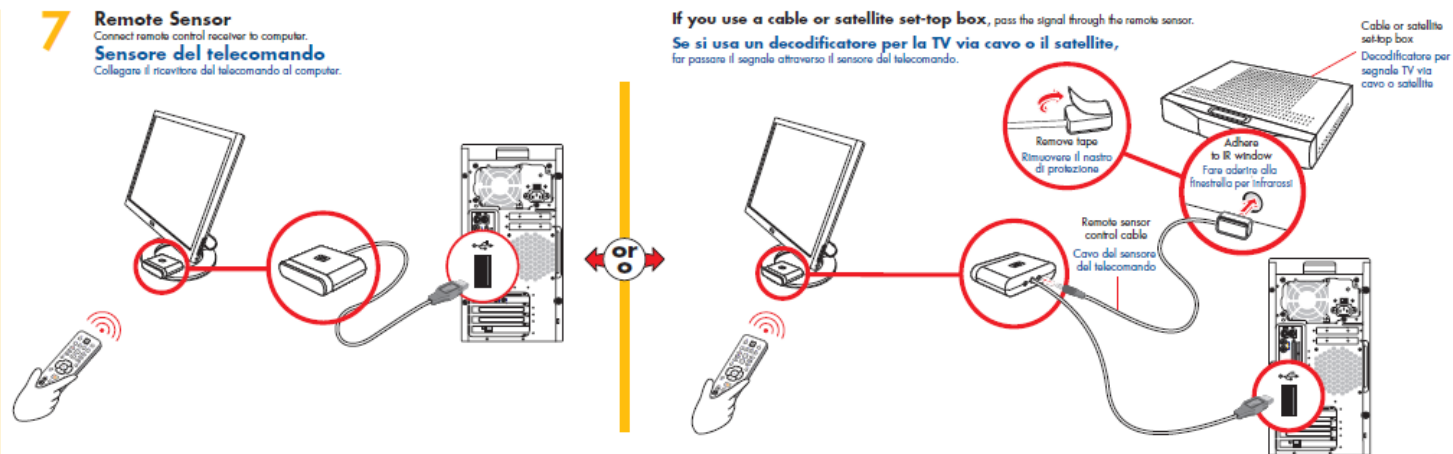


6 TV Out (TV connections are optional) TV signal from computer to TV Uscita TV (Connessioni TV opzionali) Segnale TV da computer a TV

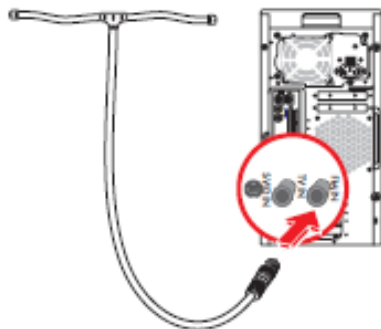


7 Remote Sensor Connect remote control receiver to computer. Sensore del telecomando Collegare il ricevitore del telecomando al computer.

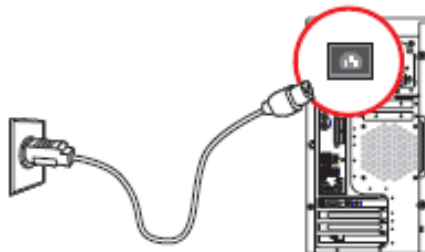
If you use a cable or satellite set-top box, pass the signal through the remote sensor.
Se si usa un decodificatore per la TV via cavo o il satellite, far passare il segnale attraverso il sensore del telecomando.



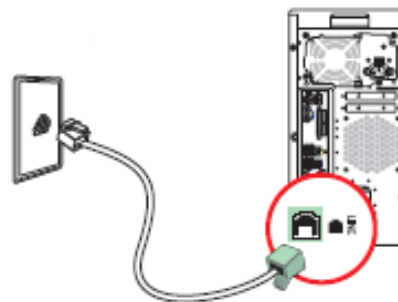
8 FM antenna *Select models only*
FM signal to computer
Antenna FM solo su alcuni modelli
Segnale FM al computer



9 Power Connection
Computer to electrical outlet.
Grounded connection or connection to surge protector is recommended.
Collegamento all'alimentazione
Dal computer alla presa elettrica.
Usare preferibilmente un collegamento con messa a terra
o un collegamento con protezione da sovvertensioni.

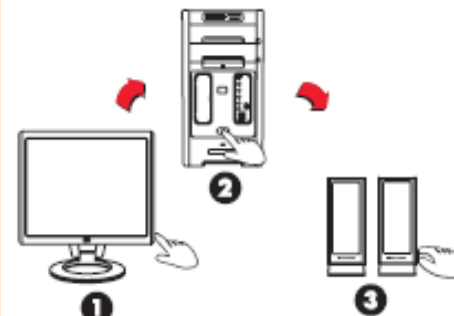


10 Modem
Modem



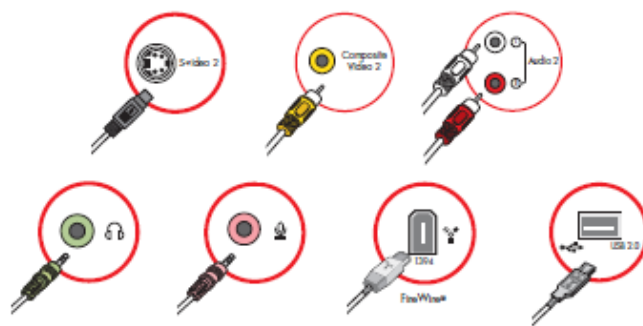
Connect modem cable to computer.
Collegare il cavo del modem al computer.

11 Power On
Accensione



Turn on monitor, computer, and sound system.
Accendere il monitor, il computer e gli altoparlanti.

Your PC may look different from the ones shown here. Component, connector location, type, and number vary by model.
 È possibile che il computer non corrisponda ai modelli illustrati di seguito. La posizione, il tipo e il numero di connettori e dispositivi variano a seconda del modello.



You Can Do I.T. / Printer and Peripheral Set-Up

Prepared for Texas State Library and Archives Commission by Carson Block Consulting